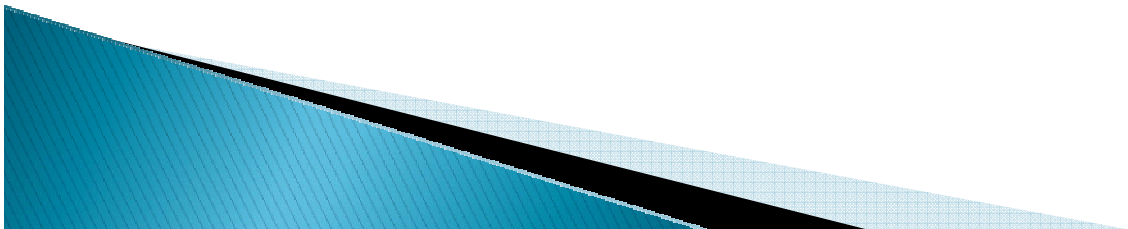


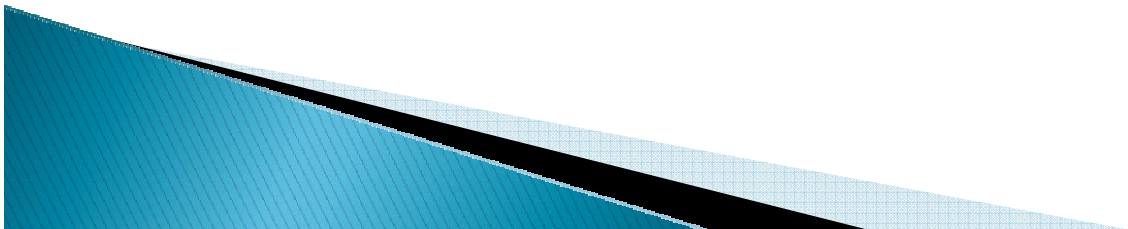
# **The Original Healthy Maine Partnerships (HMPs)– 2001-2007**

- ▶ **Fund for Healthy Maine (Tobacco Settlement)**
- ▶ **31 Coalitions across Maine - with school partners for Coordinated School Health Programs**
- ▶ **Not fully statewide, not necessarily coordinated with other related efforts or other coalitions**
- ▶ **Focus:**
  - **Reducing tobacco use and exposure**
  - **Improving access to physical activity**
  - **Improving nutrition**
  - **Primarily through changes in policy and environment**



# **Public Health Workgroup – 2005-2007**

- ▶ **Led by Governor's Office of Health Policy and Finance**
- ▶ **40 Members, Broad Representation, Build on input from as many stakeholders as possible**
  - 2 year process
- ▶ **Created in last State Health Plan, charged with specific tasks by 2 legislative resolves**
  - Make recommendations regarding creation of Comprehensive Community Health Coalitions
  - Make recommendations regarding district-level public health infrastructure



# Recommendations of the PHWG

- ▶ CCHC definition, EPHS (Essential Public Health Services) functions, threshold requirements, core competencies and performance standards
- ▶ .
- ▶ In process: Similar details for “District Coordinating Councils” to bring together all relevant partners at district level
- ▶ .

For more info:

<http://www.maine.gov/dhhs/boh/phwg/index.htm>

## Public Health Work Group

### Consensus Recommendations for Comprehensive Community Health Coalitions 1.8.07

- ◆ Definition of a Comprehensive Community Health Coalition (CCHC)
- ◆ Functions within the Ten Essential Public Health Services to be carried out by all CCHCs in Maine within 1 – 3 years
- ◆ CCHC Core Competencies and Performance Standards

#### Definition

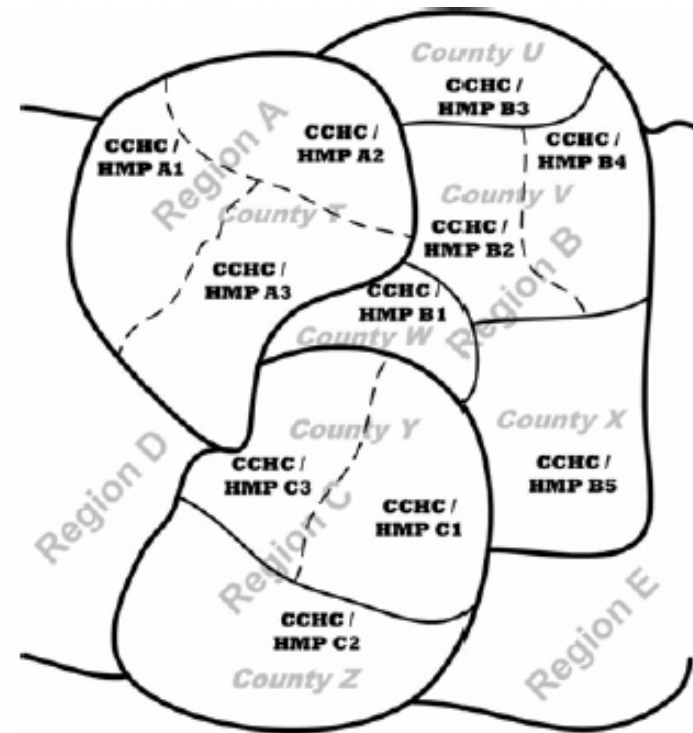
As part of Maine’s public health infrastructure, in the future a Comprehensive Community Health Coalition in Maine:

1. Serves a defined local geographic area and is part of a coordinated statewide system.
2. Uses a broad definition of health and quality of life; includes public health in its core mission.
3. Is a multi-sector coalition comprised of designated organizational representatives and interested community members who share a commitment to their communities’ health and quality of life.
4. Engages local people and others with necessary expertise to assess community health needs and assets; creates and coordinates plans to address those health needs; and mobilizes resources to implement those plans.
5. Mobilizes working partnerships in which local, regional, statewide, and national efforts and resources are combined in order to produce better results than any one organization or sector could achieve alone.
6. Links its work with local, regional, state, and federal health systems and priorities as part of a public health infrastructure that helps achieve the goals of the Maine State Health Plan.
7. Brings together:
  - Interested community members
  - Leaders of formal and informal civic groups
  - Leaders of youth, parent, and older adult groups
  - Health system leaders (e.g. hospitals, health centers, mental health and substance abuse providers)
  - Local Health Officers
  - Emergency responders
  - Local government officials
  - Leaders in early childhood development and education, K-12 schools, colleges and universities
  - Community, social service and other non-profit agency leaders
  - Leaders of issue-specific networks, coalitions and associations
  - Business leaders (e.g. Chambers of Commerce)
  - Leaders of faith-based groups
  - Law enforcement
8. Carries out some of the specific local functions within the Ten Essential Public Health Services.

PHWG Recommendations for Comprehensive Community Health Coalitions 1.8.07

# The New HMPs 2007- Integrated, Efficient, Collaborative

- Fewer Contracts
- HMP Roles Expanded
- Ongoing focus on
  - Tobacco
  - Physical Activity
  - Nutrition
- Added
  - Substance Abuse Prevention
  - Chronic Disease Screening and Self-Management
- And appropriate local functions of 10 EPHS
  - As defined by the PHWG for Comprehensive Community Health Coalitions (CCHCs)



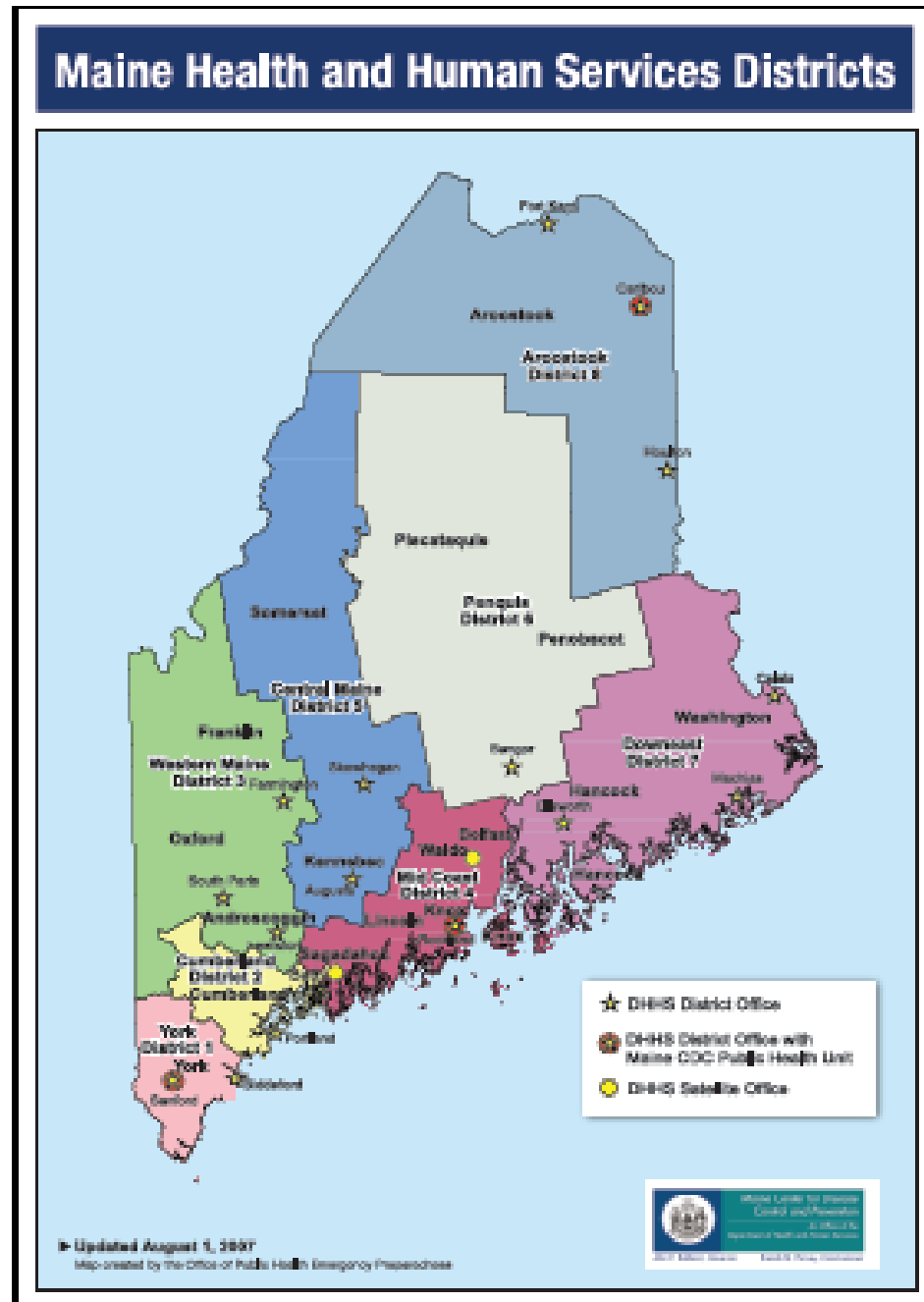
**Created:**  
8 DHHS Districts

**Emerging:**  
8 District Coordinating  
Councils (DCCs)

**Piloting:**  
MCDC District Public Health  
Liaisons (3 districts)

**Working toward:**  
District Public Health Units  
(beginning co-location of health  
inspectors, public health nurses, and  
regional epidemiologists)

Also strengthening Local Public  
Health Officer system



# Integrated Statewide System

## **Statewide Coordinating Council - SCC**

- ▶ Advises the ME CDC
- ▶ Oversight for system

## **District Coordinating Councils - DCC**

- ▶ Engage broad range of organizations/systems/ individuals within each district who do public health work
- ▶ Guidance being developed with SCC

## **Local - Healthy Maine Partnerships – HMPs**

- ▶ Work on tobacco, physical activity and nutrition, chronic disease screening & self-management, substance abuse coordinated school health
- ▶ CCHC Capacity/Functions – Essential Public Health Services
- ▶ Mobilizing for Action through Planning and Partnerships: Achieving Healthier Communities (MAPP)

Local  $\longleftrightarrow$  District  $\longleftrightarrow$  State

## **The Bigger Picture of comprehensive community health assessment & planning:**

- ▶ **Local collaboration** with many partners
  - HMPs create local service-area-wide plans
  - .
- ▶ **Provide input into District**
  - District Coordinating Council considers local plans, assesses needs and opportunities across district
  - .
- ▶ **In turn submits information to the State Health Plan, the Maine CDC**
  - Information travels back and forth improving communication and efficiencies

# MAPP Assessment

Mobilizing Action through Planning and Partnerships



For more info: <http://www.naccho.org/topics/infrastructure/MAPP.cfm>

# Definitions:

- ▶ **HMP: Healthy Maine Partnership**

- Local Coalitions begun by and still significantly funded by Fund for Healthy Maine, now with other funding too

- ▶ **CCHC: Comprehensive Community Health Coalition**

- Still the HMPs – but the new work fits under an expanded set of public health expectations. The Public Health Workgroup defined new work under this umbrella term.

- ▶ **DCC: District Coordinating Councils**

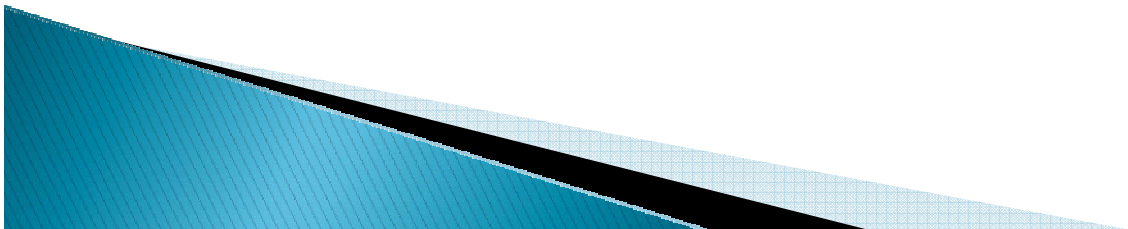
- ▶ **EPHS: 10 Essential Public Health Services**

- ▶ **MAPP: Mobilizing Action thru Planning and Partnerships**

[http://mapp.naccho.org/mapp\\_introduction.asp](http://mapp.naccho.org/mapp_introduction.asp)

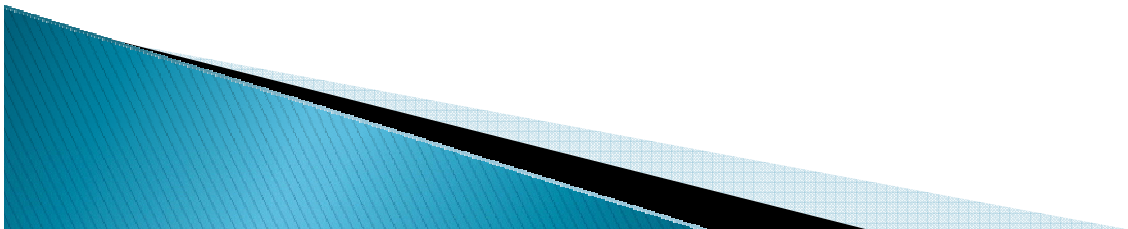
# The EPHS

- ▶ The Public Health Work Group focused much of its work on the 10 EPHS
- ▶ MAPP uses the 10 Essential Public Health Services to define public health activities
- ▶ Each level - local, district and State has responsibilities within 10 EPHS



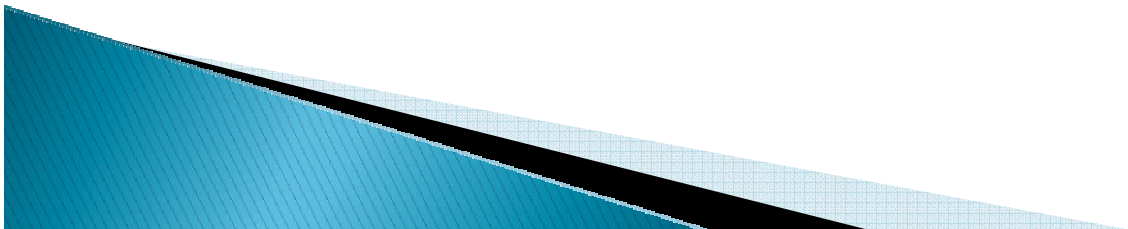
# 10 EPHS Are...

1. **Monitor health status** to identify community health problems
2. **Diagnose and investigate health problems** and health hazards in the community
3. **Inform, educate, and empower people** about health issues
4. **Mobilize community partnerships** to identify and solve health problems
5. **Develop policies and plans** that support individual and community health efforts

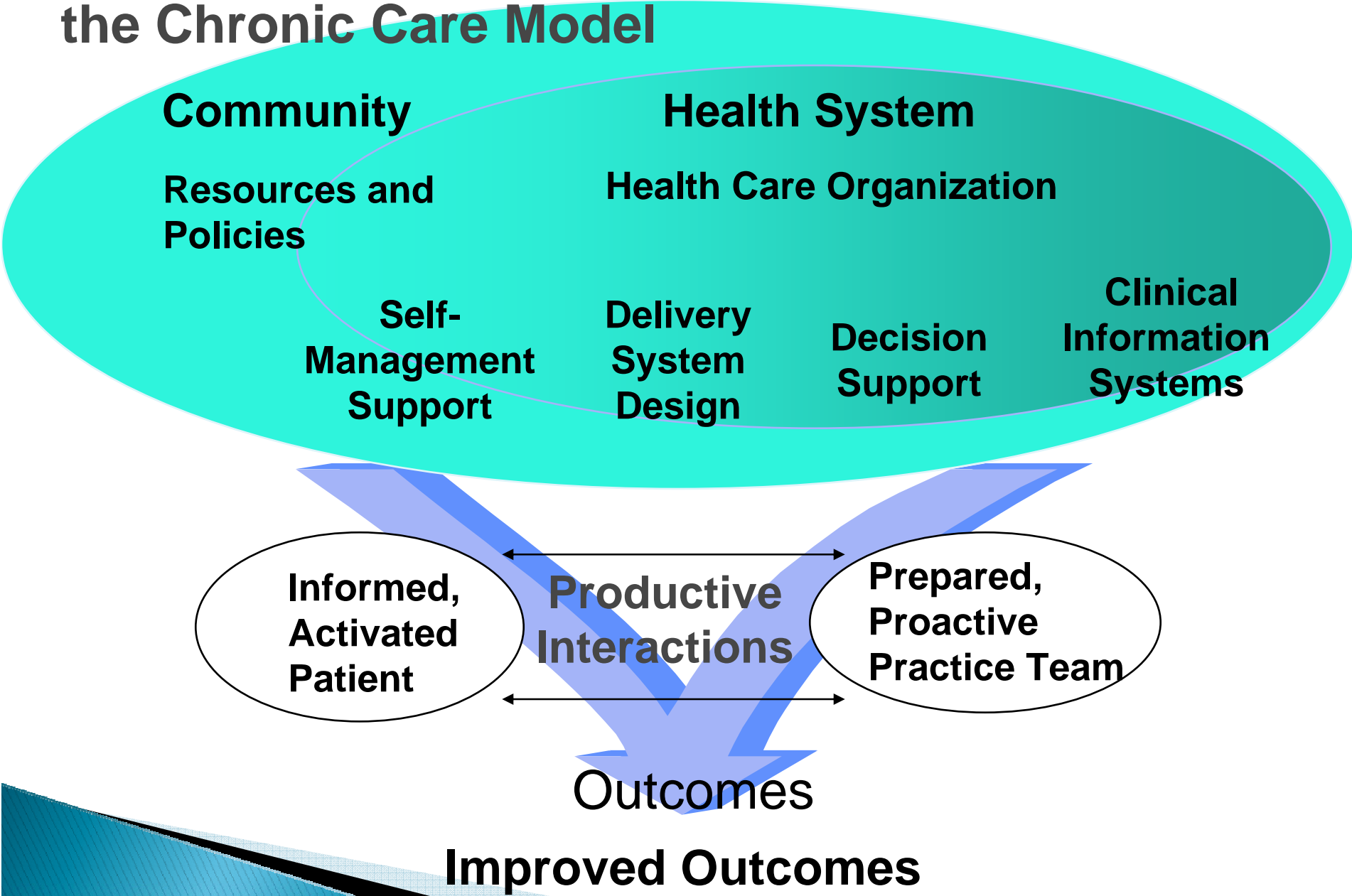


# 10 EPHS - continued

6. **Enforce laws and regulations** that protect health and ensure safety
7. **Link people to needed personal health services** and assure the provision of health care when otherwise unavailable
8. **Assure a competent public health and personal health care workforce**
9. **Evaluate** effectiveness, accessibility, and quality of personal and population-based health
10. **Research** for new insights and innovative solutions to health problems



# Interface between public health & health care: the Chronic Care Model



Wagner et al, Improving chronic care: translating evidence into action. *Health Aff (Millwood)*. 2001 Nov-Dec;20(6):64-78.

# Key websites for more info on Maine's emerging public health infrastructure

- ▶ [www.healthymainepartnerships.org](http://www.healthymainepartnerships.org)  
(find the HMPs near you)
- ▶ [www.mainepublichealth.org](http://www.mainepublichealth.org)  
(district map, all PHWG documents, district data profiles and other resources)
- ▶ 10 Essential Public Health Services  
<http://mapp.naccho.org/TipSheetEs.asp>